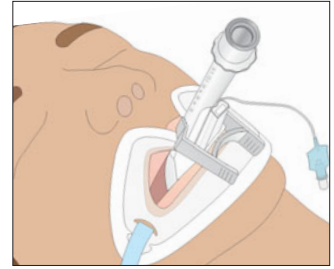


# Tube Fixations

## Rescuefix

### oral ET Tube fixation for emergency use

In emergency situations a quick and safe tube fixation is vital. The Rescuefix allows a fixation without the use of adhesives as the integrated clamp fixes the tube safely and quickly. The separable necktape is adjustable in length and therefore ideal for stiff neck as well.



Patient	Color	for ET Tube	REF	Box
Child	yellow	5.0 - 6.5 mm	<b>40-9005-111</b>	10
Adult	white	7.0 - 10.0 mm	<b>40-9005-333</b>	10



## Guedel Airway

### oropharyngeal airway with ET Tube fixation possibility

- rail and lateral clamp design allow direct fixation of the ET Tube to the Guedel Airway
- hard biteblock but soft and atraumatic tube
- same lumen from proximal to distal end allows the use of largest possible suction catheters
- one side open with smooth inner surface facilitates suctioning



#### for single use, sterile

Size	Color	REF	Box
000	light blue	<b>40-20-007-1</b>	30
00	marine	<b>40-20-008-1</b>	30
0	black	<b>40-20-009-1</b>	30
1	white	<b>40-20-010-1</b>	30
2	green	<b>40-20-020-1</b>	30
3	yellow	<b>40-20-030-1</b>	30
4	red	<b>40-20-040-1</b>	30
5	purple	<b>40-20-050-1</b>	30

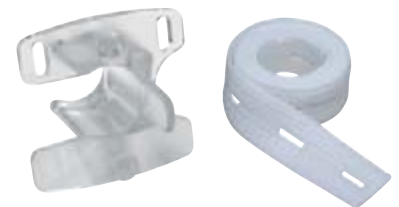
#### for single use, sterile with elastic necktape

Size	Color	REF	Box
000	light blue	<b>40-26-007-1</b>	30
00	marine	<b>40-26-008-1</b>	30
0	black	<b>40-26-009-1</b>	30
1	white	<b>40-26-010-1</b>	30
2	green	<b>40-26-020-1</b>	30
3	yellow	<b>40-26-030-1</b>	30
4	red	<b>40-26-040-1</b>	30
5	purple	<b>40-26-050-1</b>	30

## Biteblock

### oral tube fixation for ET Tube, Laryngeal Tube and Laryngeal Mask

- tube clips into biteblock and is therefore protected from occlusion



#### for single use, sterile

Size	for	Tube size	REF	Box
4	ETTUBE	6.5 - 8.0 mm	<b>40-60-040-1</b>	10
5	ETTUBE	8.5 - 11.0 mm	<b>40-60-050-1</b>	10
	Laryngeal Tube LT	# 2 + 2.5		
	Laryngeal Mask	# 2 + 2.5		
6	Laryngeal Tube	# 3, 4, 5	<b>40-60-060-1</b>	10
	Laryngeal Mask	# 3, 4, 5		

#### for single use, sterile with elastic necktape

Size	for	Tube size	REF	Box
4	ETTUBE	6.5 - 8.0 mm	<b>40-66-040-1</b>	20
5	ETTUBE	8.5 - 11.0 mm	<b>40-66-050-1</b>	20
	Laryngeal Tube LT	# 2 + 2.5		
	Laryngeal Mask	# 2 + 2.5		
6	Laryngeal Tube	# 3, 4, 5	<b>40-66-060-1</b>	20
	Laryngeal Mask	# 3, 4, 5		

